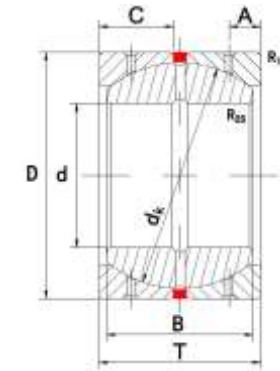




MICHIGAN MANUFACTURING
International



Radial Spherical Plain Bearings GEGZ..HS,K

-Sliding contact surfaces: Steel/Steel

Part No.	Dimensions mm							Load ratings KN		Weight kg		
	d	D	B	C	T	A	dk	rs min	r1s min		dyn. C	stat. C0
GEGZ31HS/K	31.750	61.913	35.306	16.764	38.1	7.925	54.7	1	2.5	99	395	0.363
GEGZ38HS/K	38.100	71.438	40.132	20.066	44.704	8.331	63.9	1	2.5	135	540	0.545
GEGZ44HS/K	44.450	80.963	46.228	23.368	51.308	9.525	73	1.5	3.5	180	720	0.976
GEGZ50HS/K	50.800	90.488	52.578	26.67	57.912	11.506	82	1.5	3.5	230	920	1.38
GEGZ57HS/K	57.150	100.013	58.877	29.972	64.516	12.7	92	1.5	3.5	295	1180	1.90
GEGZ63HS/K	63.500	111.125	64.643	32.385	71.12	13.081	100	2	4.5	345	1380	2.57
GEGZ69HS/K	69.850	120.650	70.866	35.687	77.724	14.681	109.5	2	4.5	420	1680	3.43
GEGZ76HS/K	76.200	130.175	76.759	39.243	84.836	16.662	119	2	4.5	500	2000	4.41
GEGZ82HS/K	82.550	139.700	82.913	42.545	91.44	17.856	128	2	4.5	585	2340	5.56
GEGZ88HS/K	88.900	149.225	90.424	45.847	98.044	19.431	137	2	4.5	675	2700	6.86
GEGZ95HS/K	95.250	158.750	94.945	49.149	104.648	19.837	146	2	4.5	775	3100	8.36
GEGZ101HS/K	101.600	177.800	107.315	55.753	117.856	22.225	164.5	2	4.5	1000	400	10
GEGZ114HS/K	114.300	196.850	119.126	62.357	131.064	25.4	183	2	4.5	1230	4920	14.88
GEGE139HS/K	139.700	222.250	125.730	66.421	139.192	34.798	207	2	4.5	1480	5920	21.79