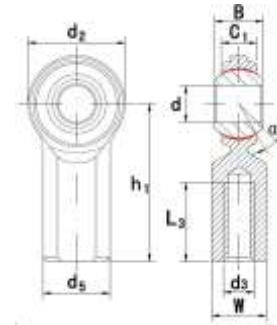




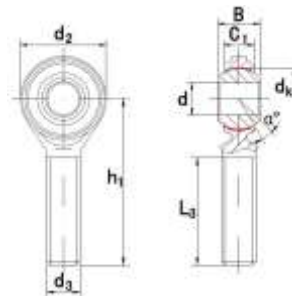
**MICHIGAN MANUFACTURING**  
International



**Rod Ends**  
CF..T/CM..T

- Rod body with right or left-hand female thread.
- Rod body pressed around inner ring.
- Surface of rod body zinc plated.
- Outer race lined with PTEF fabric.

Part No.	Dimensions mm											load ratingsKN	weight kg
	d	d3 2B	B	C1	d2	d5	h1	L3 min	dk	W	a ≈		
CF3T	4.826	10-32	7.92	5.94	15.875	10.31	26.97	12.7	11.1	7.92	10	8.02	0.018
CF4T	6.35	1/4-28	9.53	6.35	19.05	11.89	33.32	17.45	12.7	9.53	13.5	16.082	0.023
CF5T	7.938	5/16-24	11.10	7.92	22.23	12.70	34.93	17.45	15.88	11.10	11	28.693	0.036
CF6T	9.525	3/8-24	12.70	9.12	25.40	17.45	41.28	20.62	18.26	14.27	11	38.371	0.059
CF7T	11.113	7/16-20	14.27	10.31	28.58	19.05	46.02	23.80	20.62	15.88	10.5	41.676	0.082
CF8T	12.700	1/2-20	15.88	11.50	33.32	22.23	53.98	26.97	23.8	19.05	10	67.299	0.132
CF10T	15.875	5/8-18	19.05	12.29	38.10	25.40	63.50	34.93	28.58	22.23	13	75.271	0.195
CF12T	19.050	3/4-16	22.23	15.06	44.45	28.58	73.03	39.67	33.32	25.40	12	113.642	0.295



Part No.	Dimensions mm										load ratings KN	weight kg
	d	d3 3A	B	C1	d2	h1	L3 min	dk	a ≈			
CM3T	4.826	10-32	7.92	5.94	15.875	31.75	19.05	11.1	10	8.02	0.018	
CM4T	6.35	1/4-28	9.53	6.35	19.05	39.67	25.4	12.7	13.5	16.082	0.023	
CM5T	7.938	5/16-24	11.10	7.92	22.23	47.63	31.75	15.88	11	28.693	0.036	
CM6T	9.525	3/8-24	12.70	9.12	25.40	49.23	31.75	18.26	11	38.371	0.059	
CM7T	11.113	7/16-20	14.27	10.31	28.58	53.98	34.93	20.62	10.5	41.676	0.082	
CM8T	12.700	1/2-20	15.88	11.50	33.32	61.93	38.10	23.8	10	67.299	0.132	
CM10T	15.875	5/8-18	19.05	12.29	38.10	66.68	41.28	28.58	13	75.271	0.195	
CM12T	19.050	3/4-16	22.23	15.06	44.45	73.03	44.45	33.32	12	113.642	0.295	